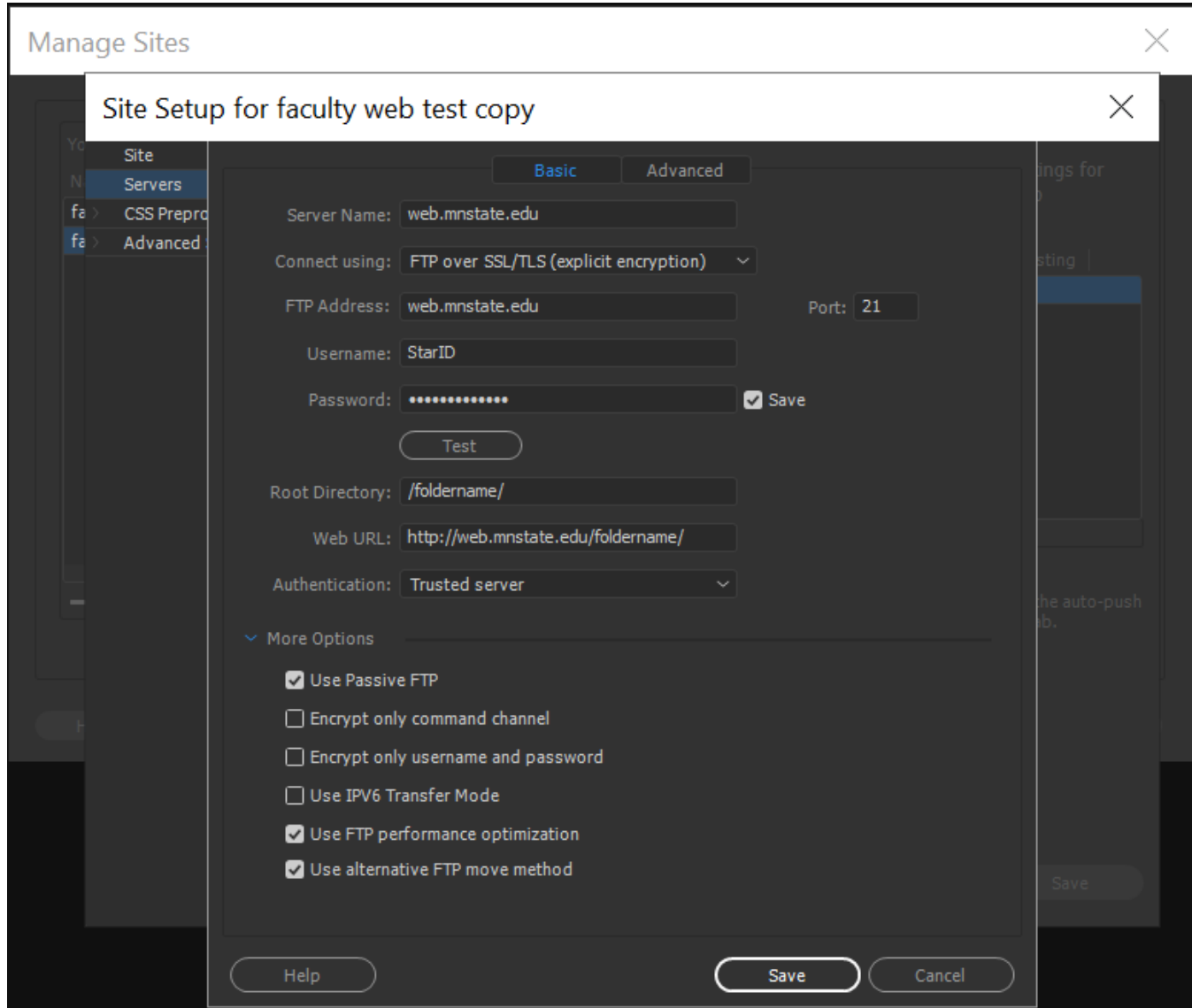


WEB3 (web.mnstate.edu) FTP Settings

This is high-level settings and instructions on how to connect to the web server **web.mnstate.edu** using Adobe Dreamweaver. We do not support anything beyond getting someone connected and authenticated to this web server.

You **MUST be on the MSUM network** in order to establish this connection; if you are not on campus you need to use the VPN client or Direct Access.

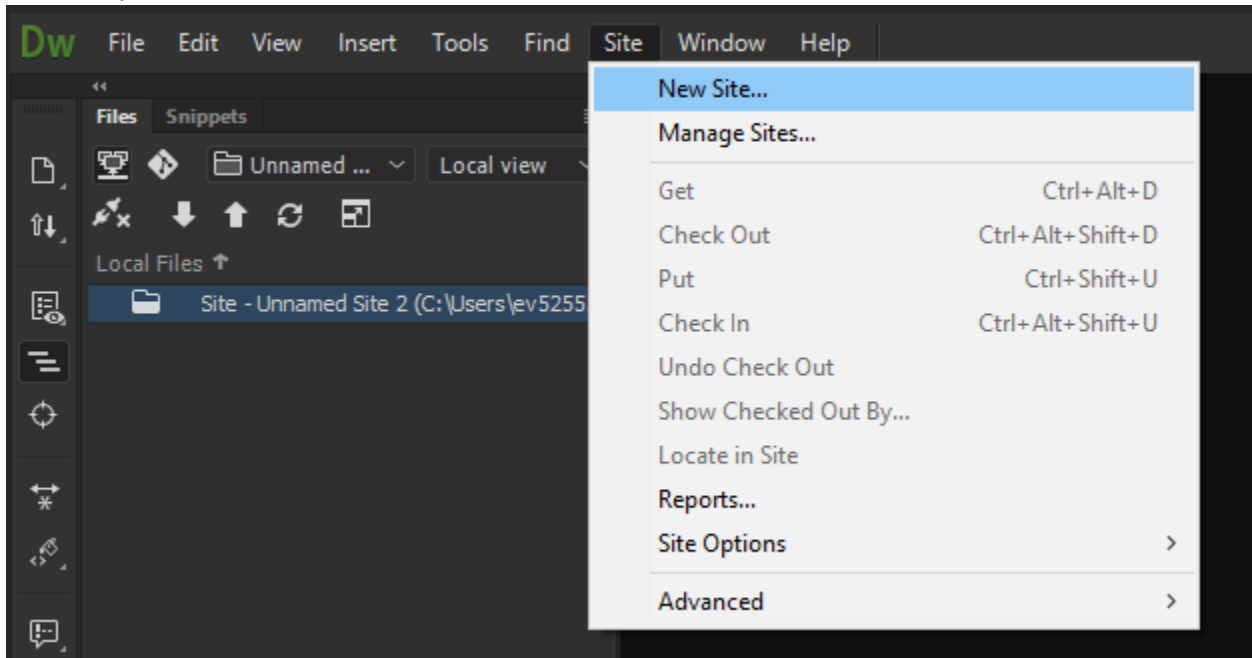
USERNAME & PASSWORD for web3 is the users StarID username and password.



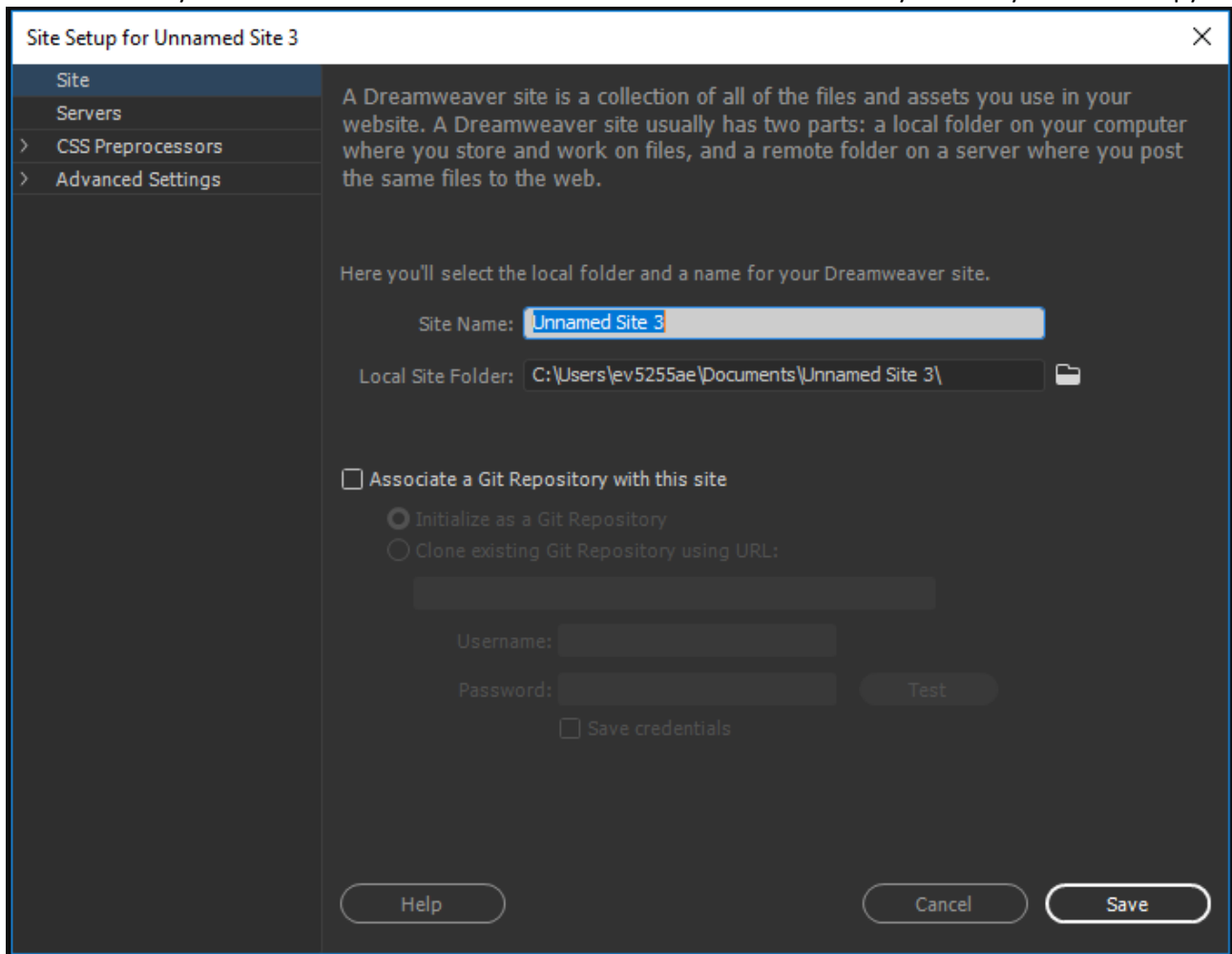
Setting up a Site in Dreamweaver

We do not support anything beyond getting user connected and authenticated to the web server.

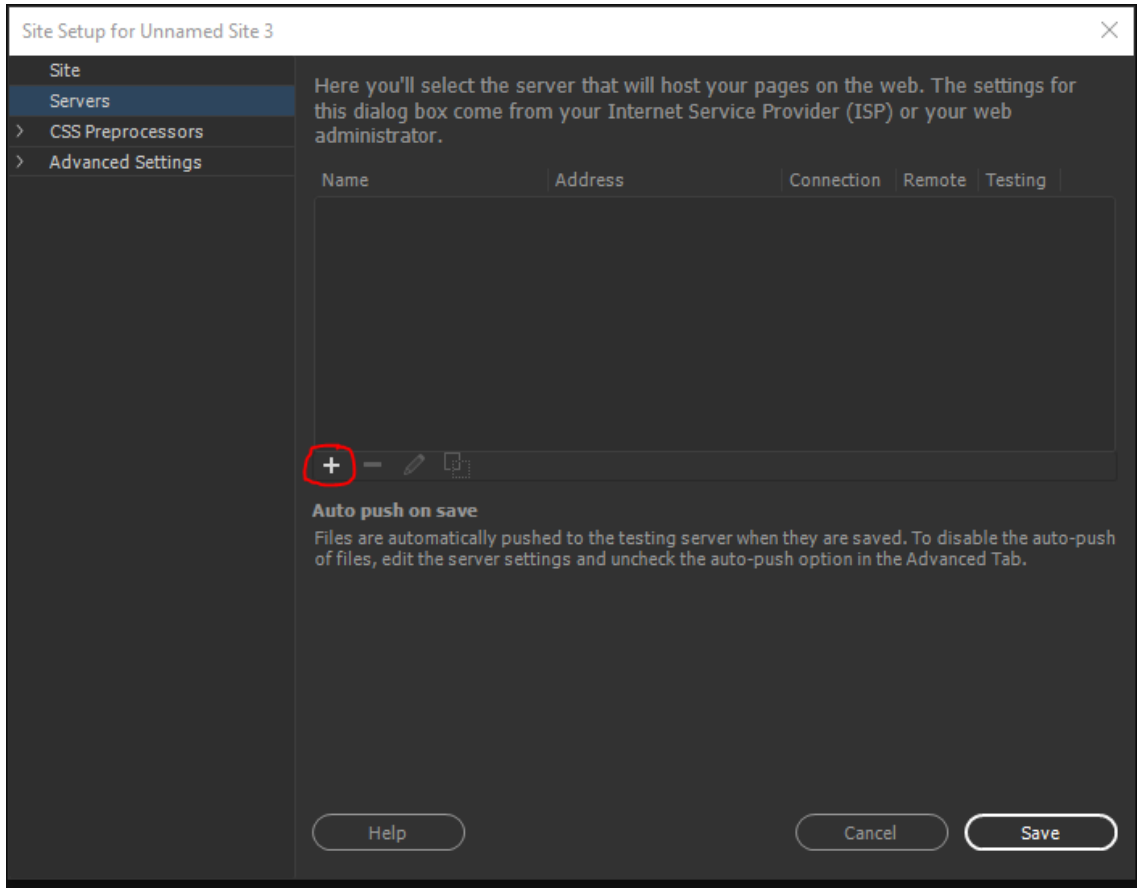
1. Open Adobe Dreamweaver (DW)
2. On the top toolbar in DW click on 'Site' and then 'New Site...'



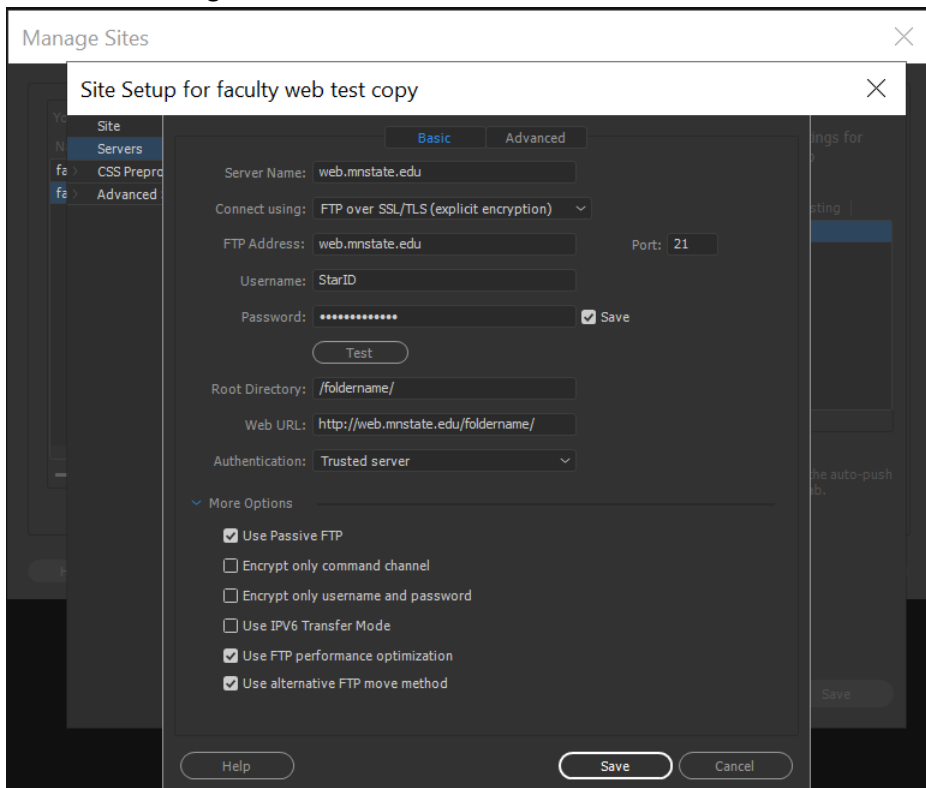
3. The Site Setup screen will display with the 'Site' option selected. This is where you will setup your LOCAL copy of your website. Enter your desired 'Site Name' and 'Browse' to the location of where you want your LOCAL copy.



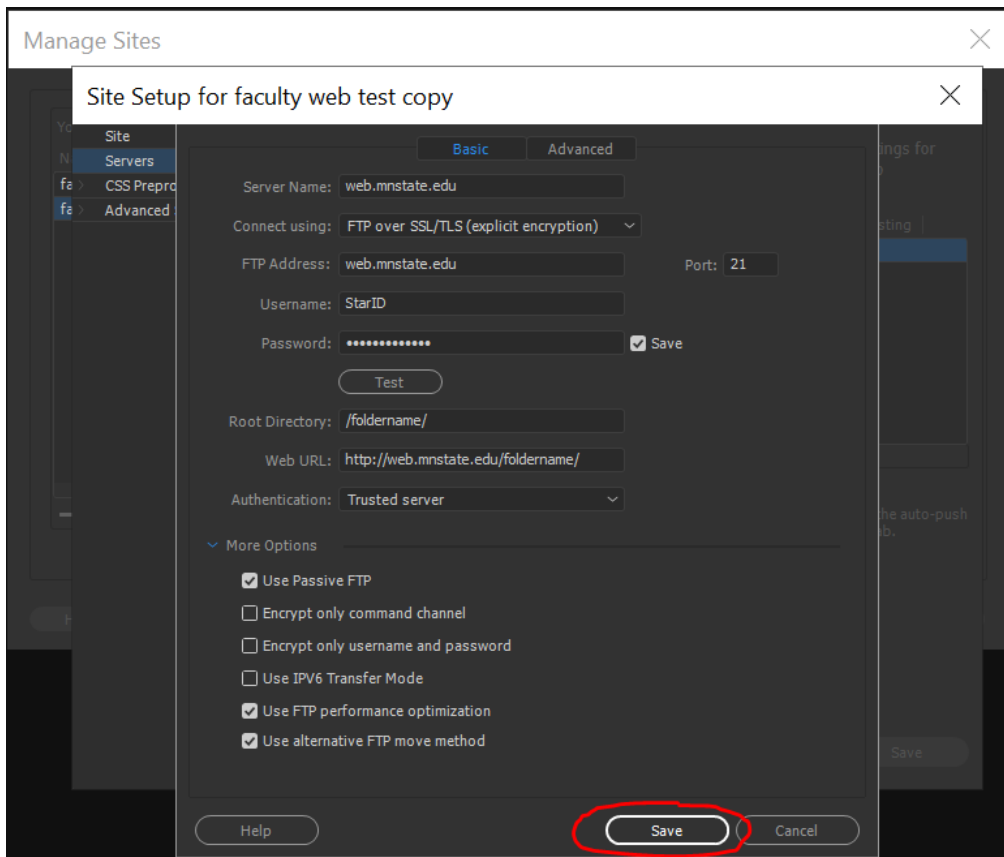
4. Click on 'Servers' to setup your connection to the server which is your REMOTE connection.
 - a. Then click on the '+' sign at the bottom of the empty box.



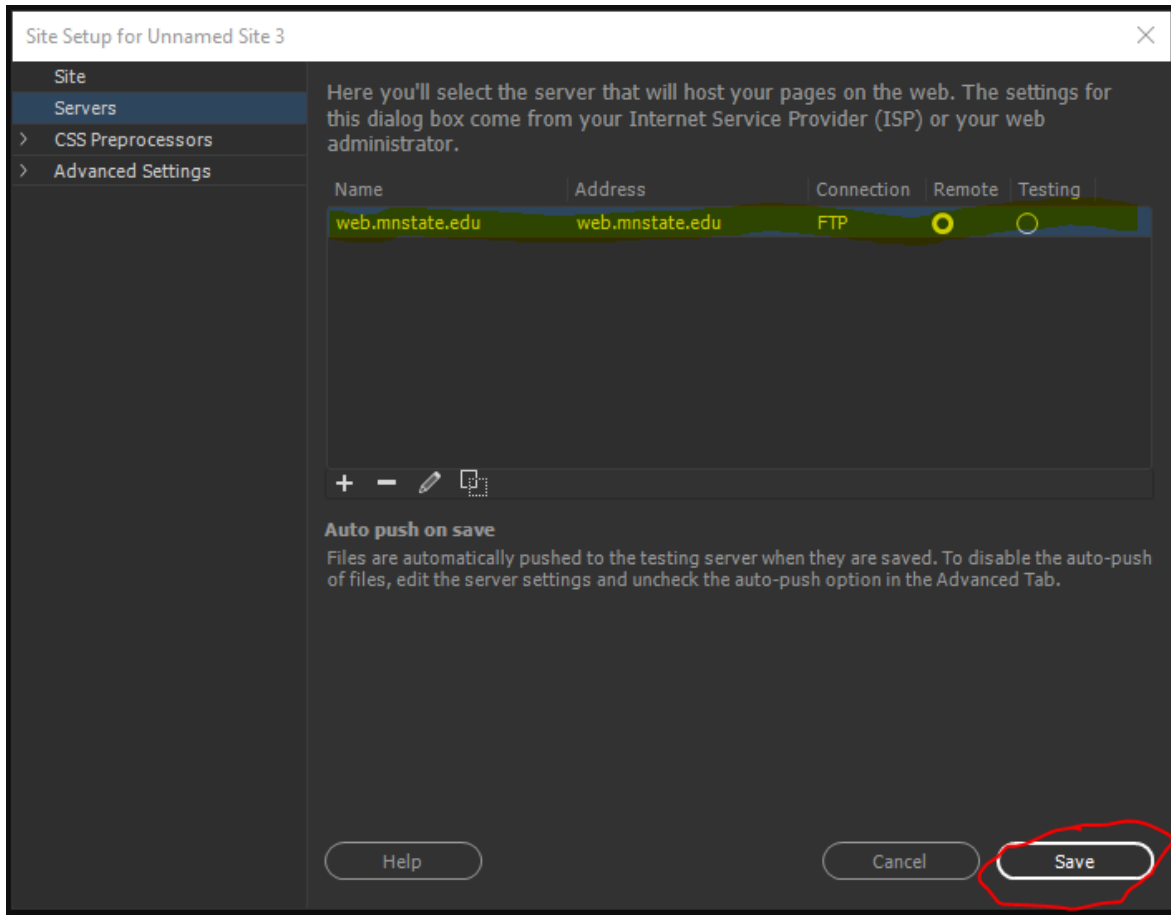
5. Fill out the FTP settings as displayed below. Your username and password is your StarID username/password. I recommend using the 'Test' button to make sure it works.



6. Click 'Save'

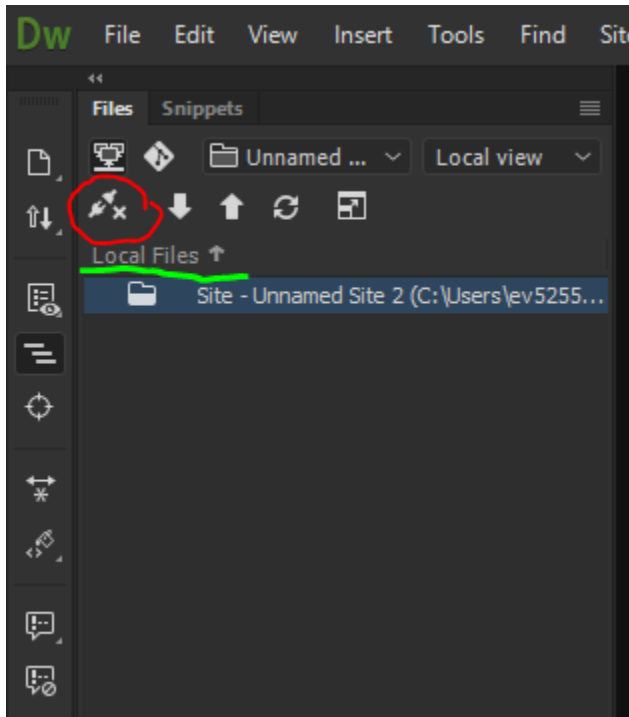


7. It will bring you back to the 'Server' screen. You should see the server name you just finished setting up in that box now. Click 'Save'.



8. In your DW 'Files' side toolbar you should see the LOCAL folder of the site you just setup. If you want to connect to the REMOTE folder click on the connect icon. When you are on your LOCAL site the connect icon will display an 'x' on it. When you are on your REMOTE site the icon will display a 'v' checkmark.

LOCAL CONNECT ICON



REMOTE CONNECT ICON

