

Here are a few solutions to common connectivity problems in WindowsXP

Ethernet port disabled (GoMoorhead Bridge users only)

LAN or High-Speed Internet



If you notice that your **Local area connection** is disabled (shown above) **right click** on it and select **Enable** (shown below)

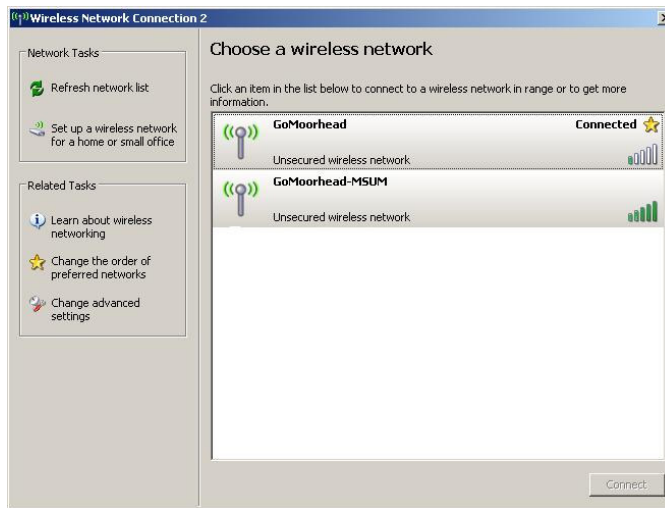
LAN or High-Speed Internet



Connecting to a wireless network or changing which network you connect to

Right click on the wireless network connection and then click on **View available wireless networks** (left) this will display a list of nearby networks (center)

LAN or High-Speed Internet



Is your computer infected with a virus or spyware?? Try these FREE tools to find out!

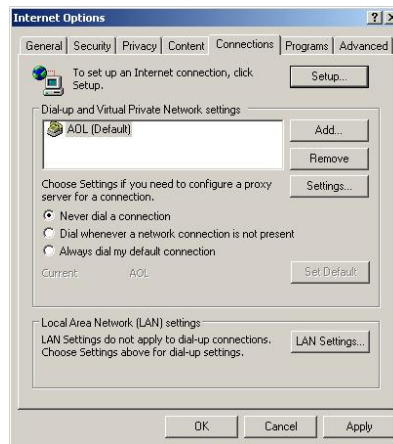
Spyware—Ewido has a free scanner on the left side of their homepage

www.ewido.net

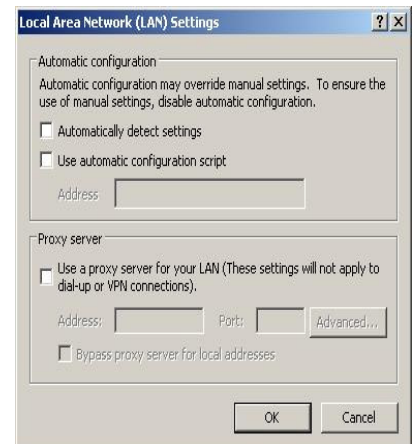
Internet explorer settings

People who had previous connections on their computer may need to change their settings in internet explorer. To get to these settings open internet explorer and click on **Tools > internet options**

If you are being asked to **dial a connection** click on the **Connections** tab and then select the **Never dial a connection** button (below)

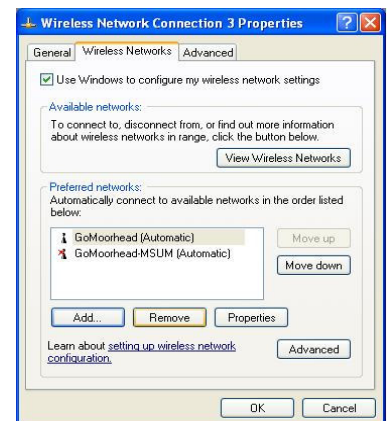


After choosing to not dial a connection you will want to select the **Lan Settings** button, once in this menu **make sure that all boxes are NOT checked**



Removing a network you do not want to connect to (Ex. GoMoorhead)

Click on **Change order of preferred networks** (center) then click on the network you wish to remove and click the **Remove** button (right)



Anti-Virus—ClamWin has a free anti-virus program available at their homepage

www.clamwin.com