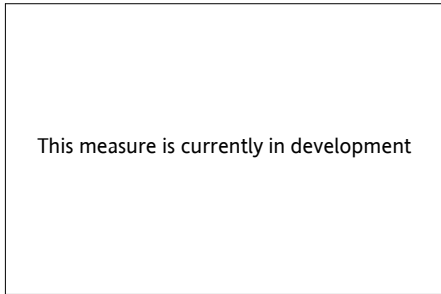


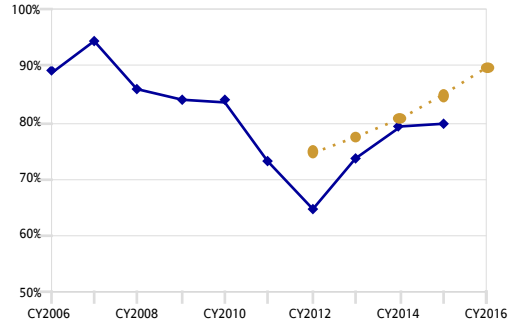
Provide Access to Extraordinary Education for All Minnesotans

QUALITY OF GRADUATES

Program Learning Outcomes



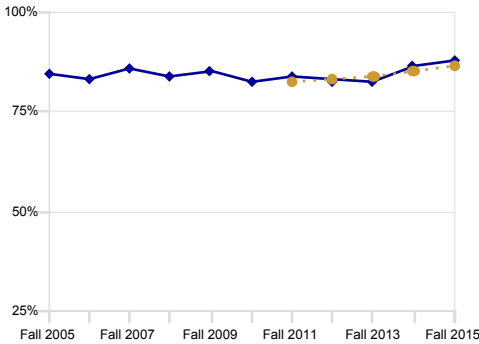
Licensure Exam Pass Rate



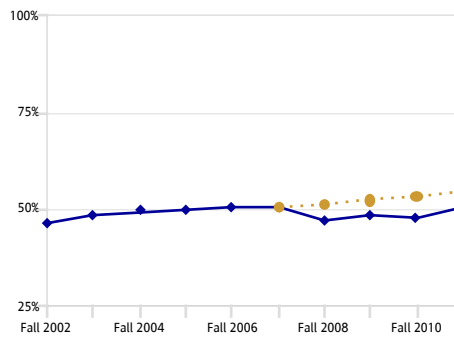
STUDENT SUCCESS

AFFORDABILITY

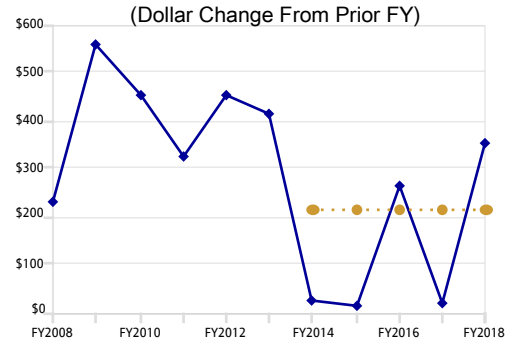
Student Persistence and Completion



Completion Rate

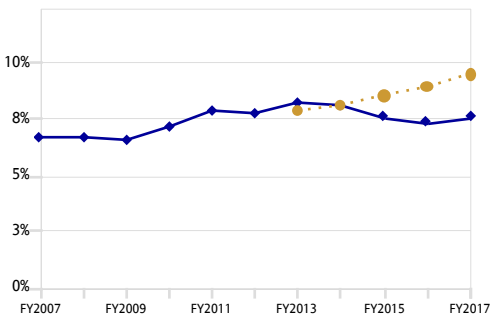


Trajectory of Tuition and Fees

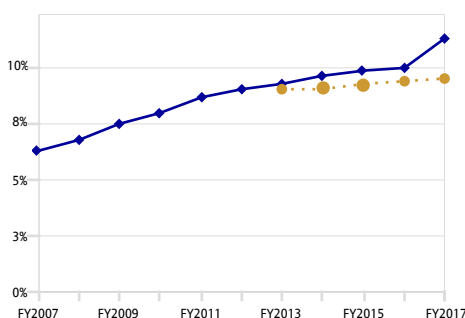


DIVERSITY

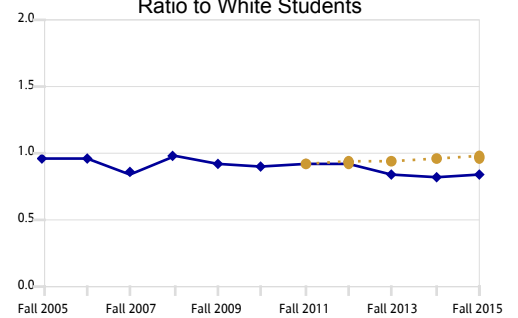
Employee Diversity - Employees of Color



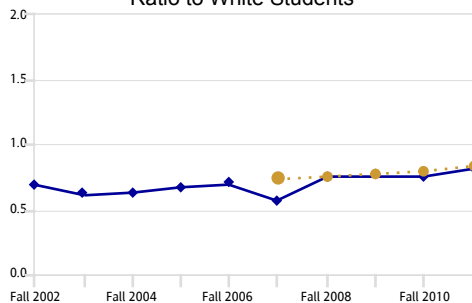
Student Diversity - Students of Color



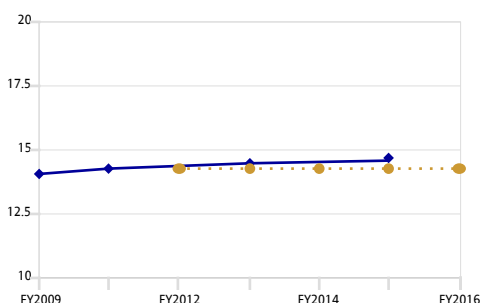
Student Success - Students of Color Ratio to White Students



Completion Rate - Students of Color Ratio to White Students



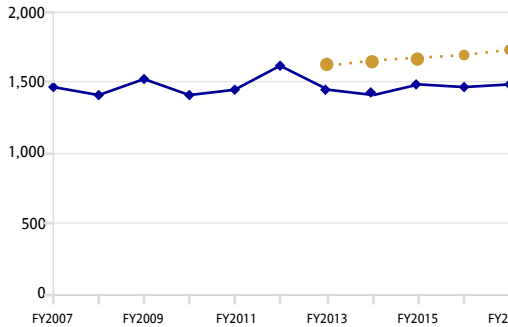
Campus Diversity Climate



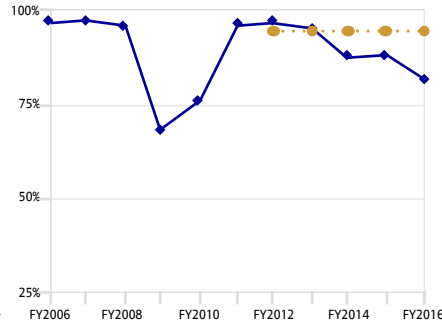
Legend: ◆ Actual ◆ Goal

Be the Partner of Choice to Meet Community and Workforce Needs

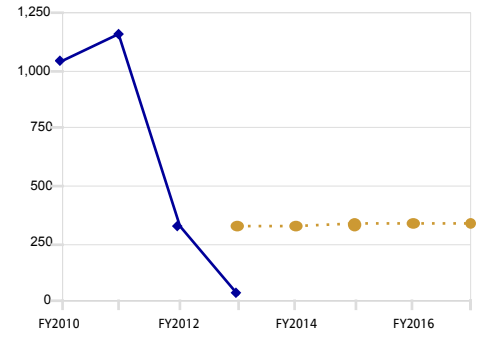
Certificates and Degrees Awarded



Related Employment of Graduates



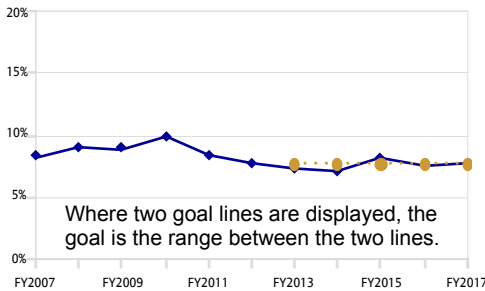
Customized Training / Continuing Education Enrollment



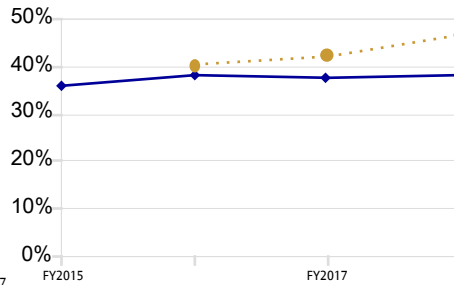
Provide Highest Value / Most Cost-Effective Higher Education Option

EFFICIENT USE OF RESOURCES

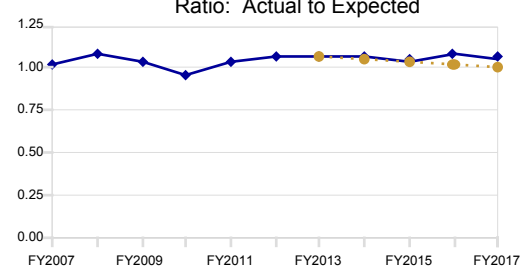
Institutional Support Expenses



Space Utilization

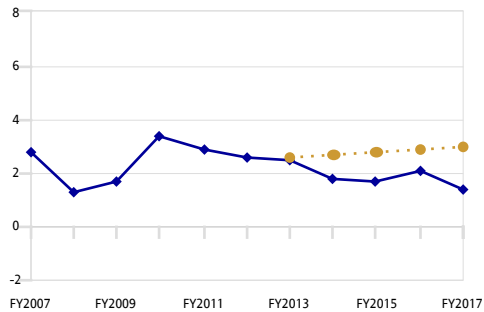


Instructional Cost Per FYE Ratio: Actual to Expected

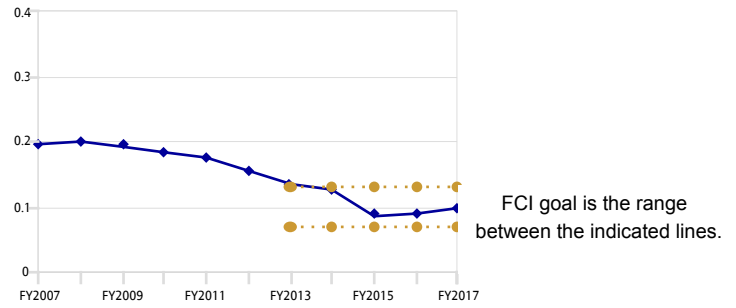


STEWARD FINANCIAL AND PHYSICAL RESOURCES

Composite Financial Index (CFI)

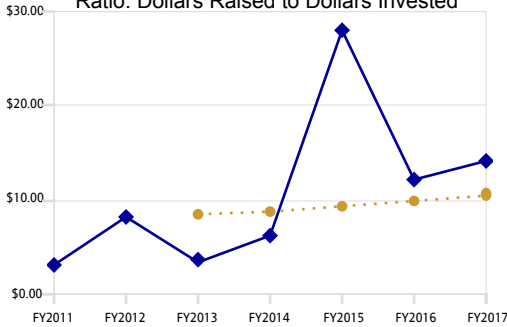


Facilities Condition Index (FCI)

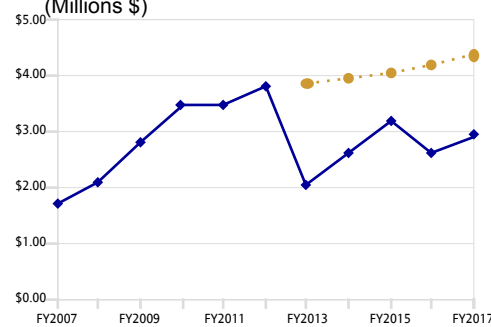


DEVELOP NEW RESOURCES

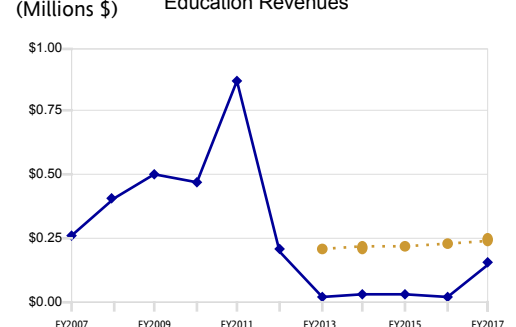
Private Giving Ratio: Dollars Raised to Dollars Invested



Grants (Millions \$)



Customized Training and Continuing Education Revenues (Millions \$)



Accountability Dashboard

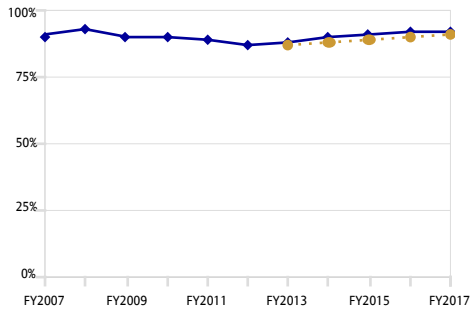
Strategic Framework Performance Measures

Minnesota State University Moorhead

Legend:  Actual  Goal

Collective Success of the MnSCU System in Serving the State and Regions

Successful Transfer: Percent Credits Accepted in Transfer at Receiving Institutions



Provide Access to Extraordinary Education for All Minnesotans

Quality of Graduates

Licensure Exam Pass Rate

Percent Passing Exams

	CY2006	CY2007	CY2008	CY2009	CY2010	CY2011	CY2012	CY2013	CY2014	CY2015	CY2016
Actual	89%	94.2%	85.8%	84.1%	83.8%	73.2%	64.7%	73.6%	79.2%	79.8%	
Goal							74.8%	77.3%	80.6%	84.7%	89.7%
Variance[^]							-10.1	-3.7	-1.4	-4.9	

Change from CY2006 to CY2015: -9.2. The rate is not reported if the number of candidates taking exams (denominator) is less than 20.

Number of Candidates Taking Exams

<u>CY2006</u>	<u>CY2007</u>	<u>CY2008</u>	<u>CY2009</u>	<u>CY2010</u>	<u>CY2011</u>	<u>CY2012</u>	<u>CY2013</u>	<u>CY2014</u>	<u>CY2015</u>	<u>CY2016</u>
254	173	233	233	191	216	289	163	197	193	

Student Success

Student Persistence and Completion

Percent Persisting, Transferring, or Graduating by Second Fall

	Fall 2005	Fall 2006	Fall 2007	Fall 2008	Fall 2009	Fall 2010	Fall 2011	Fall 2012	Fall 2013	Fall 2014	Fall 2015
Actual	84.3%	83.2%	85.8%	83.7%	85.5%	82.6%	84%	82.8%	82.5%	86.8%	87.8%
Goal							82.4%	83.1%	84%	85.1%	86.5%
Variance[^]							1.5	-0.3	-1.5	1.6	1.3

Change from Fall 2005 to Fall 2015: 3.5.

Number of Students in Fall Entering Cohort

<u>Fall 2005</u>	<u>Fall 2006</u>	<u>Fall 2007</u>	<u>Fall 2008</u>	<u>Fall 2009</u>	<u>Fall 2010</u>	<u>Fall 2011</u>	<u>Fall 2012</u>	<u>Fall 2013</u>	<u>Fall 2014</u>	<u>Fall 2015</u>
1,794	1,687	1,766	1,676	1,581	1,724	1,601	1,570	1,429	1,298	1,107

Completion Rate

Percent Completing in Three Years (Colleges) or Six Years (Universities)

	Fall 2002	Fall 2003	Fall 2004	Fall 2005	Fall 2006	Fall 2007	Fall 2008	Fall 2009	Fall 2010	Fall 2011
Actual	46.7%	48.4%	49.5%	49.7%	50.4%	50.9%	47.5%	48.3%	47.7%	50.5%
Goal						50.8%	51.5%	52.4%	53.6%	54.9%
Variance[^]						0.1	-4	-4.1	-5.9	-4.5

Change from Fall 2002 to Fall 2011: 3.7.

Number of Students in Fall Entering Cohort

<u>Fall 2002</u>	<u>Fall 2003</u>	<u>Fall 2004</u>	<u>Fall 2005</u>	<u>Fall 2006</u>	<u>Fall 2007</u>	<u>Fall 2008</u>	<u>Fall 2009</u>	<u>Fall 2010</u>	<u>Fall 2011</u>
1,900	1,946	1,898	1,794	1,687	1,766	1,676	1,581	1,724	1,601

[^] A positive or 0 variance indicates that the goal was met.
Source: System Office Research, Academic and Student Affairs Division

Accountability Dashboard

Strategic Framework Performance Measures

Minnesota State University Moorhead

Affordability

Trajectory of Tuition and Fees

Change in Tuition and Fees from Previous FY

	FY2008	FY2009	FY2010	FY2011	FY2012	FY2013	FY2014	FY2015	FY2016	FY2017	FY2018
Actual	\$ 232	\$ 557	\$ 453	\$ 326	\$ 454	\$ 415	\$ 26	\$ 13	\$ 265	\$ 21	\$ 352
Goal							\$ 215	\$ 215	\$ 215	\$ 215	\$ 215
Variance[^]							\$ 189	\$ 202	\$ -50	\$ 194	\$ -137

Change from FY2008 to FY2018: 120.

Tuition and Fees

<u>FY2008</u>	<u>FY2009</u>	<u>FY2010</u>	<u>FY2011</u>	<u>FY2012</u>	<u>FY2013</u>	<u>FY2014</u>	<u>FY2015</u>	<u>FY2016</u>	<u>FY2017</u>	<u>FY2018</u>
\$ 5,585	\$ 6,142	\$ 6,595	\$ 6,921	\$ 7,375	\$ 7,790	\$ 7,816	\$ 7,829	\$ 8,094	\$ 8,115	\$ 8,467

Diversity

Employee Diversity - Employees of Color

Employees of Color as Percent of All Employees

	FY2007	FY2008	FY2009	FY2010	FY2011	FY2012	FY2013	FY2014	FY2015	FY2016	FY2017
Actual	6.7%	6.7%	6.5%	7.2%	7.9%	7.7%	8.2%	8.1%	7.6%	7.4%	7.6%
Goal							7.9%	8.2%	8.5%	9%	9.5%
Variance[^]							0.3	0	-0.9	-1.6	-1.9

Change from FY2007 to FY2017: 0.9.

Number of Employees of Color

<u>FY2007</u>	<u>FY2008</u>	<u>FY2009</u>	<u>FY2010</u>	<u>FY2011</u>	<u>FY2012</u>	<u>FY2013</u>	<u>FY2014</u>	<u>FY2015</u>	<u>FY2016</u>	<u>FY2017</u>
59	60	57	61	69	65	69	66	58	57	57

Student Diversity - Students of Color

Student of Color as Percent of Total Credit Students

	FY2007	FY2008	FY2009	FY2010	FY2011	FY2012	FY2013	FY2014	FY2015	FY2016	FY2017
Actual	6.3%	6.8%	7.5%	8%	8.7%	9.1%	9.3%	9.6%	9.8%	10%	11.2%
Goal							9%	9.1%	9.2%	9.4%	9.5%
Variance[^]							0.3	0.5	0.6	0.6	1.7

Change from FY2007 to FY2017: 5.

Number of Students of Color (Credit)

<u>FY2007</u>	<u>FY2008</u>	<u>FY2009</u>	<u>FY2010</u>	<u>FY2011</u>	<u>FY2012</u>	<u>FY2013</u>	<u>FY2014</u>	<u>FY2015</u>	<u>FY2016</u>	<u>FY2017</u>
564	601	670	710	775	790	755	753	728	695	817

[^] A positive or 0 variance indicates that the goal was met.
Source: System Office Research, Academic and Student Affairs Division

Accountability Dashboard

Strategic Framework Performance Measures

Minnesota State University Moorhead

Diversity

Student Diversity - Pell Eligible Students (Contextual Measure)

Pell-Eligible Credit Students as Percent of Total Credit Students

	FY2007	FY2008	FY2009	FY2010	FY2011	FY2012	FY2013	FY2014	FY2015	FY2016	FY2017
Actual	22.7%	22.2%	21.5%	25.9%	29.9%	30.7%	31%	30.3%	27.9%	26%	23.4%

Change from FY2007 to FY2017: 0.8.

Number of Pell-Eligible Credit Students

<u>FY2007</u>	<u>FY2008</u>	<u>FY2009</u>	<u>FY2010</u>	<u>FY2011</u>	<u>FY2012</u>	<u>FY2013</u>	<u>FY2014</u>	<u>FY2015</u>	<u>FY2016</u>	<u>FY2017</u>
2,033	1,966	1,917	2,303	2,665	2,676	2,523	2,369	2,067	1,810	1,703

Student Diversity - First Generation Students (Contextual Measure)

First Generation Credit Students as Percent of Total Credit Students

	FY2007	FY2008	FY2009	FY2010	FY2011	FY2012	FY2013	FY2014	FY2015	FY2016	FY2017
Actual	14.2%	13.7%	13.5%	12.8%	12.4%	12.3%	12%	11.9%	11.6%	11.5%	11.4%

Change from FY2007 to FY2017: -2.8.

Number of First Generation Credit Students

<u>FY2007</u>	<u>FY2008</u>	<u>FY2009</u>	<u>FY2010</u>	<u>FY2011</u>	<u>FY2012</u>	<u>FY2013</u>	<u>FY2014</u>	<u>FY2015</u>	<u>FY2016</u>	<u>FY2017</u>
1,276	1,214	1,201	1,142	1,107	1,070	978	934	857	798	830

Student Diversity - Underrepresented Students (Contextual Measure)

Underrepresented Credit Students as Percent of Total Credit Students

	FY2007	FY2008	FY2009	FY2010	FY2011	FY2012	FY2013	FY2014	FY2015	FY2016	FY2017
Actual	34.8%	34.5%	34.3%	37.3%	40.4%	41.3%	41.4%	40.5%	38.7%	37%	35.5%

Change from FY2007 to FY2017: 0.7.

Number of Underrepresented Credit Students

<u>FY2007</u>	<u>FY2008</u>	<u>FY2009</u>	<u>FY2010</u>	<u>FY2011</u>	<u>FY2012</u>	<u>FY2013</u>	<u>FY2014</u>	<u>FY2015</u>	<u>FY2016</u>	<u>FY2017</u>
3,123	3,060	3,065	3,316	3,600	3,603	3,372	3,164	2,863	2,578	2,581

Accountability Dashboard

Strategic Framework Performance Measures

Minnesota State University Moorhead

Diversity

Student Success - Students of Color

Ratio: Persistence and Completion Rate for Students of Color to White Students, Ratio: Second Fall Persistence and Completion Rate for Students of Color to White Students

	Fall 2005	Fall 2006	Fall 2007	Fall 2008	Fall 2009	Fall 2010	Fall 2011	Fall 2012	Fall 2013	Fall 2014	Fall 2015
Actual	0.96	0.95	0.84	0.98	0.91	0.9	0.92	0.92	0.83	0.82	0.84
Goal							0.92	0.93	0.94	0.95	0.97
Variance[^]							0	0	-0.11	-0.13	-0.13

Change from Fall 2005 to Fall 2015: -0.12.

Persistence and Completion Rate for Students of Color

<u>Fall 2005</u>	<u>Fall 2006</u>	<u>Fall 2007</u>	<u>Fall 2008</u>	<u>Fall 2009</u>	<u>Fall 2010</u>	<u>Fall 2011</u>	<u>Fall 2012</u>	<u>Fall 2013</u>	<u>Fall 2014</u>	<u>Fall 2015</u>
82.6%	79.3%	73.5%	84.7%	78.6%	75.7%	77.9%	77.1%	70.4%	72.7%	75.4%

Number of Students of Color in Fall Entering Cohort

<u>Fall 2005</u>	<u>Fall 2006</u>	<u>Fall 2007</u>	<u>Fall 2008</u>	<u>Fall 2009</u>	<u>Fall 2010</u>	<u>Fall 2011</u>	<u>Fall 2012</u>	<u>Fall 2013</u>	<u>Fall 2014</u>	<u>Fall 2015</u>
115	135	132	144	154	185	145	170	169	139	126

Persistence and Completion Rate for White Students

<u>Fall 2005</u>	<u>Fall 2006</u>	<u>Fall 2007</u>	<u>Fall 2008</u>	<u>Fall 2009</u>	<u>Fall 2010</u>	<u>Fall 2011</u>	<u>Fall 2012</u>	<u>Fall 2013</u>	<u>Fall 2014</u>	<u>Fall 2015</u>
86%	83.5%	87.1%	86.3%	86.1%	83.8%	85.1%	83.6%	84.9%	88.9%	90.1%

Number of White Students in Fall Entering Cohort

<u>Fall 2005</u>	<u>Fall 2006</u>	<u>Fall 2007</u>	<u>Fall 2008</u>	<u>Fall 2009</u>	<u>Fall 2010</u>	<u>Fall 2011</u>	<u>Fall 2012</u>	<u>Fall 2013</u>	<u>Fall 2014</u>	<u>Fall 2015</u>
1,548	1,452	1,495	1,347	1,333	1,409	1,293	1,266	1,109	990	867

Student Success - Pell Eligible Students (Contextual Measure)

Ratio: Persistence and Completion Rate for Pell-Eligible to Non-Pell-Eligible Students, Ratio: Second Fall Persistence and Completion Rate for Pell-Eligible to Non-Pell-Eligible Students

	Fall 2005	Fall 2006	Fall 2007	Fall 2008	Fall 2009	Fall 2010	Fall 2011	Fall 2012	Fall 2013	Fall 2014	Fall 2015
Actual	0.96	0.86	0.94	0.93	0.95	0.94	0.92	0.91	0.88	0.91	0.89

Change from Fall 2005 to Fall 2015: -0.08.

Persistence and Completion Rate for Pell-Eligible Students

<u>Fall 2005</u>	<u>Fall 2006</u>	<u>Fall 2007</u>	<u>Fall 2008</u>	<u>Fall 2009</u>	<u>Fall 2010</u>	<u>Fall 2011</u>	<u>Fall 2012</u>	<u>Fall 2013</u>	<u>Fall 2014</u>	<u>Fall 2015</u>
83.7%	74.4%	82%	81.3%	83%	79.5%	80.2%	78.4%	75.8%	82.9%	81.1%

Number of Pell-Eligible Students in Fall Entering Cohort

<u>Fall 2005</u>	<u>Fall 2006</u>	<u>Fall 2007</u>	<u>Fall 2008</u>	<u>Fall 2009</u>	<u>Fall 2010</u>	<u>Fall 2011</u>	<u>Fall 2012</u>	<u>Fall 2013</u>	<u>Fall 2014</u>	<u>Fall 2015</u>
422	434	439	411	540	624	575	551	475	426	333

Persistence and Completion Rate for Non-Pell-Eligible Students

<u>Fall 2005</u>	<u>Fall 2006</u>	<u>Fall 2007</u>	<u>Fall 2008</u>	<u>Fall 2009</u>	<u>Fall 2010</u>	<u>Fall 2011</u>	<u>Fall 2012</u>	<u>Fall 2013</u>	<u>Fall 2014</u>	<u>Fall 2015</u>
87.1%	86.3%	86.9%	87.5%	87.4%	84.2%	87.3%	86%	85.9%	90.8%	91.6%

Number of Non-Pell-Eligible Students in Fall Entering Cohort

<u>Fall 2005</u>	<u>Fall 2006</u>	<u>Fall 2007</u>	<u>Fall 2008</u>	<u>Fall 2009</u>	<u>Fall 2010</u>	<u>Fall 2011</u>	<u>Fall 2012</u>	<u>Fall 2013</u>	<u>Fall 2014</u>	<u>Fall 2015</u>
1,027	965	1,009	927	812	875	803	802	743	681	595

[^] A positive or 0 variance indicates that the goal was met.
Source: System Office Research, Academic and Student Affairs Division

Diversity

Student Success - First Generation Students (Contextual Measure)

Ratio: Persistence and Completion Rate for First Generation to Non-First Generation Students, Ratio: Second Fall Persistence and Completion Rate for First Generation to Non-First Generation Students

	Fall 2005	Fall 2006	Fall 2007	Fall 2008	Fall 2009	Fall 2010	Fall 2011	Fall 2012	Fall 2013	Fall 2014	Fall 2015
Actual	0.96	0.95	0.96	0.95	0.93	0.89	0.98	0.98	0.9	0.92	0.87

Change from Fall 2005 to Fall 2015: -0.09.

Persistence and Completion Rate for First Generation Students

Fall 2005	Fall 2006	Fall 2007	Fall 2008	Fall 2009	Fall 2010	Fall 2011	Fall 2012	Fall 2013	Fall 2014	Fall 2015
83.2%	80%	82.3%	80.8%	79.9%	74.4%	82.6%	81.8%	75.5%	81.2%	77.5%

Number of First Generation Students in Fall Entering Cohort

Fall 2005	Fall 2006	Fall 2007	Fall 2008	Fall 2009	Fall 2010	Fall 2011	Fall 2012	Fall 2013	Fall 2014	Fall 2015
220	235	198	208	184	195	190	176	151	138	102

Persistence and Completion Rate for Non-First Generation Students

Fall 2005	Fall 2006	Fall 2007	Fall 2008	Fall 2009	Fall 2010	Fall 2011	Fall 2012	Fall 2013	Fall 2014	Fall 2015
86.3%	84.1%	86%	84.9%	86.1%	83.6%	84.7%	83.1%	83.5%	88.3%	89.1%

Number of Non-First Generation Students in Fall Entering Cohort

Fall 2005	Fall 2006	Fall 2007	Fall 2008	Fall 2009	Fall 2010	Fall 2011	Fall 2012	Fall 2013	Fall 2014	Fall 2015
1,477	1,382	1,480	1,413	1,355	1,490	1,359	1,364	1,234	1,071	959

Student Success of Diverse Populations (Contextual Measure)

Ratio: Underrepresented Student Persistence and Completion Rate to Non-Underrepresented Rate

	Fall 2005	Fall 2006	Fall 2007	Fall 2008	Fall 2009	Fall 2010	Fall 2011	Fall 2012	Fall 2013	Fall 2014	Fall 2015
Actual	0.97	0.89	0.92	0.94	0.92	0.94	0.92	0.92	0.89	0.9	0.88

Change from Fall 2005 to Fall 2015: -0.09.

Persistence and Completion Rate for Underrepresented Students

Fall 2005	Fall 2006	Fall 2007	Fall 2008	Fall 2009	Fall 2010	Fall 2011	Fall 2012	Fall 2013	Fall 2014	Fall 2015
83.8%	77.3%	81.3%	81.9%	82%	79.7%	80.5%	79.3%	77.3%	82.8%	81.3%

Number of Underrepresented Students in Fall Entering Cohort

Fall 2005	Fall 2006	Fall 2007	Fall 2008	Fall 2009	Fall 2010	Fall 2011	Fall 2012	Fall 2013	Fall 2014	Fall 2015
606	630	619	601	685	773	703	699	600	541	423

Non-Underrepresented Student Persistence and Completion Rate

Fall 2005	Fall 2006	Fall 2007	Fall 2008	Fall 2009	Fall 2010	Fall 2011	Fall 2012	Fall 2013	Fall 2014	Fall 2015
86.7%	86.6%	88.4%	87.4%	89.2%	84.9%	87.9%	86.5%	86.5%	91.7%	92.7%

Number of Non-Underrepresented Students in Fall Entering Cohort

Fall 2005	Fall 2006	Fall 2007	Fall 2008	Fall 2009	Fall 2010	Fall 2011	Fall 2012	Fall 2013	Fall 2014	Fall 2015
851	769	817	764	674	716	652	658	621	543	506

^ A positive or 0 variance indicates that the goal was met.
Source: System Office Research, Academic and Student Affairs Division

Diversity

Completion Rate - Students of Color

Ratio: Completion Rate for Students of Color to White Students, Ratio: Completion Rate for Students of Color to White Students (Complete in 3 Yrs at Colleges, 6 Yrs at Universities)

	Fall 2002	Fall 2003	Fall 2004	Fall 2005	Fall 2006	Fall 2007	Fall 2008	Fall 2009	Fall 2010	Fall 2011
Actual	0.69	0.63	0.64	0.68	0.71	0.58	0.77	0.77	0.76	0.83
Goal						0.75	0.76	0.78	0.81	0.84
Variance[^]						-0.16	0	-0.01	-0.05	-0.01

Change from Fall 2002 to Fall 2011: 0.13.

Completion Rate for Students of Color

<u>Fall 2002</u>	<u>Fall 2003</u>	<u>Fall 2004</u>	<u>Fall 2005</u>	<u>Fall 2006</u>	<u>Fall 2007</u>	<u>Fall 2008</u>	<u>Fall 2009</u>	<u>Fall 2010</u>	<u>Fall 2011</u>
32.9%	30.8%	32.7%	34.8%	36.3%	30.3%	37.5%	37.7%	36.8%	42.1%

Number of Students of Color in Fall Entering Cohort

<u>Fall 2002</u>	<u>Fall 2003</u>	<u>Fall 2004</u>	<u>Fall 2005</u>	<u>Fall 2006</u>	<u>Fall 2007</u>	<u>Fall 2008</u>	<u>Fall 2009</u>	<u>Fall 2010</u>	<u>Fall 2011</u>
82	107	113	115	135	132	144	154	185	145

Completion Rate for White Students

<u>Fall 2002</u>	<u>Fall 2003</u>	<u>Fall 2004</u>	<u>Fall 2005</u>	<u>Fall 2006</u>	<u>Fall 2007</u>	<u>Fall 2008</u>	<u>Fall 2009</u>	<u>Fall 2010</u>	<u>Fall 2011</u>
47.6%	49.1%	50.9%	50.9%	51.2%	52%	48.9%	48.9%	48.6%	50.9%

Number of White Students in Fall Entering Cohort

<u>Fall 2002</u>	<u>Fall 2003</u>	<u>Fall 2004</u>	<u>Fall 2005</u>	<u>Fall 2006</u>	<u>Fall 2007</u>	<u>Fall 2008</u>	<u>Fall 2009</u>	<u>Fall 2010</u>	<u>Fall 2011</u>
1,579	1,663	1,600	1,548	1,452	1,495	1,347	1,333	1,409	1,293

Completion Rate - Pell Eligible Students (Contextual Measure)

Ratio: Completion Rate for Pell-Eligible to Non-Pell-Eligible Students, Ratio: Completion Rate for Pell-Eligible to Non-Pell-Eligible Students (Complete in 3 Yrs at Colleges, 6 Yrs at Universities)

	Fall 2002	Fall 2003	Fall 2004	Fall 2005	Fall 2006	Fall 2007	Fall 2008	Fall 2009	Fall 2010	Fall 2011
Actual	0.92	0.85	0.93	0.9	0.84	0.88	0.87	0.95	0.87	0.86

Change from Fall 2002 to Fall 2011: -0.05.

Completion Rate for Pell-Eligible Students

<u>Fall 2002</u>	<u>Fall 2003</u>	<u>Fall 2004</u>	<u>Fall 2005</u>	<u>Fall 2006</u>	<u>Fall 2007</u>	<u>Fall 2008</u>	<u>Fall 2009</u>	<u>Fall 2010</u>	<u>Fall 2011</u>
43.6%	42.8%	47.3%	46.2%	43.3%	45.8%	42.8%	46.5%	43.3%	45%

Number of Pell-Eligible Students in Fall Entering Cohort

<u>Fall 2002</u>	<u>Fall 2003</u>	<u>Fall 2004</u>	<u>Fall 2005</u>	<u>Fall 2006</u>	<u>Fall 2007</u>	<u>Fall 2008</u>	<u>Fall 2009</u>	<u>Fall 2010</u>	<u>Fall 2011</u>
576	556	541	422	434	439	411	540	624	575

Completion Rate for Non-Pell-Eligible Students

<u>Fall 2002</u>	<u>Fall 2003</u>	<u>Fall 2004</u>	<u>Fall 2005</u>	<u>Fall 2006</u>	<u>Fall 2007</u>	<u>Fall 2008</u>	<u>Fall 2009</u>	<u>Fall 2010</u>	<u>Fall 2011</u>
47.6%	50.6%	51%	51.6%	51.4%	51.9%	49.3%	49.1%	49.8%	52.2%

Number of Non-Pell-Eligible Students in Fall Entering Cohort

<u>Fall 2002</u>	<u>Fall 2003</u>	<u>Fall 2004</u>	<u>Fall 2005</u>	<u>Fall 2006</u>	<u>Fall 2007</u>	<u>Fall 2008</u>	<u>Fall 2009</u>	<u>Fall 2010</u>	<u>Fall 2011</u>
998	1,058	1,015	1,027	965	1,009	927	812	875	803

[^] A positive or 0 variance indicates that the goal was met.
Source: System Office Research, Academic and Student Affairs Division

Diversity

Completion Rate - First Generation Students (Contextual Measure)

Ratio: Completion Rate for First Generation to Non-First Generation Students, Ratio: Completion Rate for First Generation to Non-First Generation Students (Complete in 3 Yrs at Colleges, 6 Yrs at Universities)

	Fall 2002	Fall 2003	Fall 2004	Fall 2005	Fall 2006	Fall 2007	Fall 2008	Fall 2009	Fall 2010	Fall 2011
Actual	0.94	1.02	0.88	0.91	0.97	0.98	0.86	0.9	0.76	0.98

Change from Fall 2002 to Fall 2011: 0.04.

Completion Rate for First Generation Students

Fall 2002	Fall 2003	Fall 2004	Fall 2005	Fall 2006	Fall 2007	Fall 2008	Fall 2009	Fall 2010	Fall 2011
43.6%	49%	44.8%	46.4%	48.9%	49%	41.4%	44%	36.9%	49.5%

Number of First Generation Students in Fall Entering Cohort

Fall 2002	Fall 2003	Fall 2004	Fall 2005	Fall 2006	Fall 2007	Fall 2008	Fall 2009	Fall 2010	Fall 2011
335	261	310	220	235	198	208	184	195	190

Completion Rate for Non-First Generation Students

Fall 2002	Fall 2003	Fall 2004	Fall 2005	Fall 2006	Fall 2007	Fall 2008	Fall 2009	Fall 2010	Fall 2011
46.5%	48.1%	51.2%	50.9%	50.3%	50.1%	48.3%	48.9%	48.7%	50.7%

Number of Non-First Generation Students in Fall Entering Cohort

Fall 2002	Fall 2003	Fall 2004	Fall 2005	Fall 2006	Fall 2007	Fall 2008	Fall 2009	Fall 2010	Fall 2011
1,416	1,573	1,468	1,477	1,382	1,480	1,413	1,355	1,490	1,359

Completion Rate for Diverse Populations (Contextual Measure)

Ratio: Underrepresented Student Completion Rate to Non-Underrepresented Completion Rate

	Fall 2002	Fall 2003	Fall 2004	Fall 2005	Fall 2006	Fall 2007	Fall 2008	Fall 2009	Fall 2010	Fall 2011
Actual	0.87	0.87	0.9	0.88	0.86	0.88	0.86	0.9	0.83	0.89

Change from Fall 2002 to Fall 2011: 0.02.

Completion Rate for Underrepresented Students

Fall 2002	Fall 2003	Fall 2004	Fall 2005	Fall 2006	Fall 2007	Fall 2008	Fall 2009	Fall 2010	Fall 2011
42.7%	44.1%	46.9%	45.5%	44.9%	46.2%	43.1%	45.7%	42.4%	46.1%

Number of Underrepresented Students in Fall Entering Cohort

Fall 2002	Fall 2003	Fall 2004	Fall 2005	Fall 2006	Fall 2007	Fall 2008	Fall 2009	Fall 2010	Fall 2011
805	744	747	606	630	619	601	685	773	703

Non-Underrepresented Student Completion Rate

Fall 2002	Fall 2003	Fall 2004	Fall 2005	Fall 2006	Fall 2007	Fall 2008	Fall 2009	Fall 2010	Fall 2011
49%	50.7%	52%	51.8%	52.5%	52.8%	50.1%	50.9%	51.4%	51.8%

Number of Non-Underrepresented Students in Fall Entering Cohort

Fall 2002	Fall 2003	Fall 2004	Fall 2005	Fall 2006	Fall 2007	Fall 2008	Fall 2009	Fall 2010	Fall 2011
700	840	788	851	769	817	764	674	716	652

^ A positive or 0 variance indicates that the goal was met.
Source: System Office Research, Academic and Student Affairs Division

Diversity

Campus Diversity Climate

Campus Diversity Climate Score

	FY2009	FY2011	FY2012	FY2013	FY2014	FY2015	FY2016
Actual	14	14.3		14.5		14.6	
Goal			14.3	14.3	14.3	14.3	14.3
Variance[^]				0.2		0.3	

Change from FY2009 to FY2015: 0.6.

Number of Student Survey Responses

<u>FY2009</u>	<u>FY2011</u>	<u>FY2012</u>	<u>FY2013</u>	<u>FY2014</u>	<u>FY2015</u>	<u>FY2016</u>
957	744		784		719	

[^] A positive or 0 variance indicates that the goal was met.
 Source: System Office Research, Academic and Student Affairs Division

Be the Partner of Choice to Meet Workforce and Community Needs

Certificates and Degrees Awarded

Number of Certificates, Diplomas and Degrees Awarded

	FY2007	FY2008	FY2009	FY2010	FY2011	FY2012	FY2013	FY2014	FY2015	FY2016	FY2017 *
Actual	1,468	1,417	1,521	1,407	1,439	1,621	1,449	1,421	1,476	1,468	1,477
Goal							1,631	1,647	1,669	1,696	1,729
Variance[^]							-182	-226	-193	-228	-252

* Preliminary Data

Change from FY2007 to FY2017: 9.

Change from Previous Year

<u>FY2007</u>	<u>FY2008</u>	<u>FY2009</u>	<u>FY2010</u>	<u>FY2011</u>	<u>FY2012</u>	<u>FY2013</u>	<u>FY2014</u>	<u>FY2015</u>	<u>FY2016</u>	<u>FY2017</u>
12	-51	104	-114	32	182	-172	-28	55	-8	9

Related Employment of Graduates

Related Employment Percent

	FY2006	FY2007	FY2008	FY2009	FY2010	FY2011	FY2012	FY2013	FY2014	FY2015	FY2016
Actual	97%	97.1%	96.2%	68.3%	75.7%	96.3%	97%	95.4%	87.7%	88.4%	81.5%
Goal							94.5%	94.5%	94.5%	94.5%	94.5%
Variance[^]							2.5	0.9	-6.8	-6.1	-13

Change from FY2006 to FY2016: -15.4. The rate is not reported if the number of graduates (denominator) is less than 20.

Number Surveyed and Available for Related Employment

<u>FY2006</u>	<u>FY2007</u>	<u>FY2008</u>	<u>FY2009</u>	<u>FY2010</u>	<u>FY2011</u>	<u>FY2012</u>	<u>FY2013</u>	<u>FY2014</u>	<u>FY2015</u>	<u>FY2016</u>
1,081	970	958	974	808	882	1,116	904	958	973	1,072

Customized Training / Continuing Education Enrollment

Number Enrolled

	FY2010	FY2011	FY2012	FY2013	FY2014	FY2015	FY2016	FY2017
Actual	1,050	1,160	325	31				
Goal				327	329	332	336	341
Variance[^]				-296				

Change from FY2010 to FY2013: -1,019.

Change from Previous Year

<u>FY2010</u>	<u>FY2011</u>	<u>FY2012</u>	<u>FY2013</u>	<u>FY2014</u>	<u>FY2015</u>	<u>FY2016</u>	<u>FY2017</u>
	110	-835	-294				

[^] A positive or 0 variance indicates that the goal was met.
Source: System Office Research, Academic and Student Affairs Division

Provide Highest Value / Most Cost-Effective Higher Education Option
Efficient Use of Resources

Institutional Support Expenses

Percent Institutional Support Expenses

	FY2007	FY2008	FY2009	FY2010	FY2011	FY2012	FY2013	FY2014	FY2015	FY2016	FY2017
Actual	8.3%	9%	8.9%	9.9%	8.5%	7.7%	7.4%	7.2%	8.2%	7.6%	7.7%
Goal							7.7%	7.7%	7.7%	7.7%	7.7%
Variance[^]							0.3	0.5	-0.5	0.1	0

Change from FY2007 to FY2017: -0.6.

Total Institutional Support Expenses (\$millions)

<u>FY2007</u>	<u>FY2008</u>	<u>FY2009</u>	<u>FY2010</u>	<u>FY2011</u>	<u>FY2012</u>	<u>FY2013</u>	<u>FY2014</u>	<u>FY2015</u>	<u>FY2016</u>	<u>FY2017</u>
\$ 6.937	\$ 7.987	\$ 8.127	\$ 9.176	\$ 7.998	\$ 7.076	\$ 6.705	\$ 6.799	\$ 7.723	\$ 7.021	\$ 7.112

Space Utilization

Percent of available academic room time that is utilized for credit courses.

	FY2015	FY2016	FY2017	FY2018
Actual	36%	38.3%	37.5%	38.1%
Goal		40.1%	42.3%	46.6%
Variance[^]		-1.8	-4.8	-8.5

Change from FY2015 to FY2018: 2.1.

Hours per FY that academic rooms are utilized for credit courses.

<u>FY2015</u>	<u>FY2016</u>	<u>FY2017</u>	<u>FY2018</u>
53,778	57,142	54,734	57,462

Instructional Cost Per FYE

Ratio: Actual-to-Expected Value for Instructional Expenditures per FYE

	FY2007	FY2008	FY2009	FY2010	FY2011	FY2012	FY2013	FY2014	FY2015	FY2016	FY2017
Actual	1.02	1.09	1.03	0.96	1.03	1.07	1.07	1.07	1.05	1.09	1.06
Goal							1.07	1.06	1.04	1.02	1
Variance[^]							0	-0.01	0	-0.06	-0.06

Change from FY2007 to FY2017: 0.04.

Actual value: Fully-allocated instructional expenditures per FYE

<u>FY2007</u>	<u>FY2008</u>	<u>FY2009</u>	<u>FY2010</u>	<u>FY2011</u>	<u>FY2012</u>	<u>FY2013</u>	<u>FY2014</u>	<u>FY2015</u>	<u>FY2016</u>	<u>FY2017</u>
\$ 8,924	\$ 10,326	\$ 9,884	\$ 8,893	\$ 9,359	\$ 9,802	\$ 10,401	\$ 11,467	\$ 11,471	\$ 12,265	\$ 12,167

Expected value: Fully-allocated instructional expenditures per FYE

<u>FY2007</u>	<u>FY2008</u>	<u>FY2009</u>	<u>FY2010</u>	<u>FY2011</u>	<u>FY2012</u>	<u>FY2013</u>	<u>FY2014</u>	<u>FY2015</u>	<u>FY2016</u>	<u>FY2017</u>
\$ 8,761	\$ 9,487	\$ 9,586	\$ 9,303	\$ 9,055	\$ 9,121	\$ 9,738	\$ 10,710	\$ 10,969	\$ 11,292	\$ 11,478

[^] A positive or 0 variance indicates that the goal was met.
Source: System Office Research, Academic and Student Affairs Division

Accountability Dashboard

Strategic Framework Performance Measures

Minnesota State University Moorhead

Efficient Use of Resources

Steward Financial and Physical Resources

Composite Financial Index (CFI)

CFI

	FY2007	FY2008	FY2009	FY2010	FY2011	FY2012	FY2013	FY2014	FY2015	FY2016	FY2017
Actual	2.8	1.27	1.66	3.37	2.89	2.57	2.48	1.75	1.72	2.05	1.42
Goal							2.61	2.68	2.76	2.87	3
Variance[^]							-0.13	-0.93	-1.04	-0.82	-1.58

Change from FY2007 to FY2017: -1.38.

Change from Previous Year

<u>FY2007</u>	<u>FY2008</u>	<u>FY2009</u>	<u>FY2010</u>	<u>FY2011</u>	<u>FY2012</u>	<u>FY2013</u>	<u>FY2014</u>	<u>FY2015</u>	<u>FY2016</u>	<u>FY2017</u>
1.03	-1.53	0.39	1.7	-0.47	-0.32	-0.09	-0.73	-0.03	0.33	-0.63

Facilities Condition Index (FCI)

FCI

	FY2007	FY2008	FY2009	FY2010	FY2011	FY2012	FY2013	FY2014	FY2015	FY2016	FY2017
Actual	0.2	0.2	0.19	0.18	0.18	0.16	0.14	0.13	0.09	0.09	0.1
Goal							0.07-0.13	0.07-0.13	0.07-0.13	0.07-0.13	0.07-0.13
Variance[^]							-0.01	0	0	0	0

Change from FY2007 to FY2017: -0.1.

Deferred Maintenance Amount (\$thousands)

<u>FY2007</u>	<u>FY2008</u>	<u>FY2009</u>	<u>FY2010</u>	<u>FY2011</u>	<u>FY2012</u>	<u>FY2013</u>	<u>FY2014</u>	<u>FY2015</u>	<u>FY2016</u>	<u>FY2017</u>
\$ 81,489	\$ 87,507	\$ 90,353	\$ 85,777	\$ 85,587	\$ 80,696	\$ 71,397	\$ 68,965	\$ 51,129	\$ 56,284	\$ 64,316

Develop New Resources

Private Giving

Ratio: Dollars Raised to Dollars Invested

	FY2011	FY2012	FY2013	FY2014	FY2015	FY2016	FY2017
Actual	\$ 3.25	\$ 8.19	\$ 3.58	\$ 6.17	\$ 28.04	\$ 12.1	\$ 14.06
Goal			\$ 8.43	\$ 8.8	\$ 9.29	\$ 9.91	\$ 10.64
Variance[^]			\$ -4.85	\$ -2.63	\$ 18.74	\$ 2.19	\$ 3.42

Change from FY2011 to FY2017: \$ 10.814.

Dollars Raised by the Foundation (\$millions)

<u>FY2011</u>	<u>FY2012</u>	<u>FY2013</u>	<u>FY2014</u>	<u>FY2015</u>	<u>FY2016</u>	<u>FY2017</u>
\$ 2.355	\$ 4.772	\$ 1.756	\$ 3.507	\$ 10.258	\$ 4.112	\$ 6.04

[^] A positive or 0 variance indicates that the goal was met.
Source: System Office Research, Academic and Student Affairs Division

Accountability Dashboard

Strategic Framework Performance Measures

Minnesota State University Moorhead

Develop New Resources

Net Dollar amount provided by the institution to the Foundation.

<u>FY2011</u>	<u>FY2012</u>	<u>FY2013</u>	<u>FY2014</u>	<u>FY2015</u>	<u>FY2016</u>	<u>FY2017</u>
\$ 724,856	\$ 582,843	\$ 490,663	\$ 568,472	\$ 365,878	\$ 339,885	\$ 429,458

Grants

Grant Revenue (\$millions)

	FY2007	FY2008	FY2009	FY2010	FY2011	FY2012	FY2013	FY2014	FY2015	FY2016	FY2017
Actual	\$ 1.708	\$ 2.069	\$ 2.77	\$ 3.451	\$ 3.449	\$ 3.789	\$ 2.027	\$ 2.625	\$ 3.189	\$ 2.596	\$ 2.913
Goal							\$ 3.846	\$ 3.931	\$ 4.045	\$ 4.187	\$ 4.358
Variance[^]							\$ -1.819	\$ -1.307	\$ -0.856	\$ -1.591	\$ -1.444

Change from FY2007 to FY2017: \$ 1.205.

Change from Previous Year (\$millions)

<u>FY2007</u>	<u>FY2008</u>	<u>FY2009</u>	<u>FY2010</u>	<u>FY2011</u>	<u>FY2012</u>	<u>FY2013</u>	<u>FY2014</u>	<u>FY2015</u>	<u>FY2016</u>	<u>FY2017</u>
	\$ 0.361	\$ 0.702	\$ 0.681	\$ -0.002	\$ 0.34	\$ -1.762	\$ 0.598	\$ 0.565	\$ -0.594	\$ 0.318

Customized Training and Continuing Education Revenues

Customized Training Revenue - Net of State Appropriations (\$millions)

	FY2007	FY2008	FY2009	FY2010	FY2011	FY2012	FY2013	FY2014	FY2015	FY2016	FY2017
Actual	\$ 0.258	\$ 0.409	\$ 0.498	\$ 0.467	\$ 0.866	\$ 0.205	\$ 0.017	\$ 0.028	\$ 0.027	\$ 0.025	\$ 0.151
Goal							\$ 0.209	\$ 0.215	\$ 0.223	\$ 0.234	\$ 0.246
Variance[^]							\$ -0.192	\$ -0.187	\$ -0.196	\$ -0.209	\$ -0.095

Change from FY2007 to FY2017: \$ -0.106.

Change from Previous Year (\$millions)

<u>FY2007</u>	<u>FY2008</u>	<u>FY2009</u>	<u>FY2010</u>	<u>FY2011</u>	<u>FY2012</u>	<u>FY2013</u>	<u>FY2014</u>	<u>FY2015</u>	<u>FY2016</u>	<u>FY2017</u>
	\$ 0.152	\$ 0.089	\$ -0.031	\$ 0.4	\$ -0.661	\$ -0.188	\$ 0.011	\$ -0.001	\$ -0.002	\$ 0.126

[^] A positive or 0 variance indicates that the goal was met.
Source: System Office Research, Academic and Student Affairs Division

Collective Success of the MnSCU System in Serving the State and Regions

Successful Transfer: Percent Credits Accepted in Transfer at Receiving Institutions

Percent Credits Accepted

	FY2007	FY2008	FY2009	FY2010	FY2011	FY2012	FY2013	FY2014	FY2015	FY2016	FY2017
Actual	90.5%	93.1%	90.5%	89.9%	89.4%	87.3%	88.3%	89.9%	91.2%	92.1%	92.6%
Goal							87.3%	88%	88.8%	89.9%	91.3%
Variance[^]							1	1.9	2.4	2.1	1.4

Change from FY2007 to FY2017: 2.1.

Total Credits Accepted

<u>FY2007</u>	<u>FY2008</u>	<u>FY2009</u>	<u>FY2010</u>	<u>FY2011</u>	<u>FY2012</u>	<u>FY2013</u>	<u>FY2014</u>	<u>FY2015</u>	<u>FY2016</u>	<u>FY2017</u>
19,879	19,392	20,212	23,198	26,891	27,642	35,966	33,385	30,374	31,685	29,834

[^] A positive or 0 variance indicates that the goal was met.
 Source: System Office Research, Academic and Student Affairs Division



Accountability Dashboard

Strategic Framework Performance Measures

Measure Definitions

Provide Access to Extraordinary Education for All Minnesotans

Quality of Graduates

Program Learning Outcomes

Measure Description:	Percent of graduates of certificate and degree programs meeting program learning outcomes. (This measure is currently under development).
Numerator Description:	TBD
Denominator Description:	TBD
Reporting Level:	Institution
Source:	TBD
Goal Direction:	Increase

Licensure Exam Pass Rate

Measure Description:	Percent of a cohort of students or graduates that passed a state or national licensure examination. This measure is a weighted average pass rate and currently includes four licensing exams: nursing, teaching, peace officer, and radiography.
Numerator Description:	Total number of students or graduates that passed the exams included in the measure.
Denominator Description:	Total number of students or graduates taking the exams.
Reporting Level:	Institution
Source:	State or national licensing boards. (Collected and entered into System data warehouse). Nursing: Minnesota Board of Nursing. Law Enforcement: Minnesota Peace Officers Standards and Training Board. Radiologic Technology: American Registry of Radiologic Technologists. Teacher Education: U.S. Education Department Title II Report and the Minnesota State Board of Teaching
Goal Direction:	Increase

Student Success

Student Persistence and Completion

Measure Description:	Percent of a fall entering cohort of full-time regular and transfer students who have been retained, graduated or transferred by the second fall term following original fall enrollment.
Numerator Description:	The number of entering students in the cohort who have graduated, were retained or transferred by the second fall.
Denominator Description:	The total number of entering students in the fall entering cohort.
Reporting Level:	Institution
Source:	System Data Warehouse
Goal Direction:	Increase



Accountability Dashboard

Strategic Framework Performance Measures

Measure Definitions

Provide Access to Extraordinary Education for All Minnesotans

Student Success

Completion Rate

Measure Description:	Percent of an entering cohort of full-time undergraduate regular and transfer students that has completed. Completion is measured as graduation by the end of the sixth spring after entry at the universities and as graduation or transfer by the end of the third spring after entry at the colleges.
Numerator Description:	The number of entering students in the cohort who have graduated by the sixth spring after entry at the universities and graduation or transferred by the third spring after entry at the colleges.
Denominator Description:	The total number of entering students in the fall entering cohort.
Reporting Level:	Institution
Source:	System Data Warehouse
Goal Direction:	Increase

Affordability

Net Tuition and Fees

Measure Description:	Net tuition and fees as percent of statewide median income.
Numerator Description:	Tuition and fees net of financial aid.
Denominator Description:	Statewide median income.
Reporting Level:	System
Source:	System data warehouse for tuition and fees data; Census Bureau for median income data
Goal Direction:	Decrease

Trajectory of Tuition and Fees

Measure Description:	Annual dollar change from the previous fiscal year in Board of Trustees-approved tuition and required fees for full-time undergraduate students.
Numerator Description:	Current Fiscal year tuition and fees.
Denominator Description:	Most recent-past Fiscal Year tuition and fees.
Reporting Level:	Institution
Source:	System Data Warehouse
Goal Direction:	Minimize the increase



Accountability Dashboard

Strategic Framework Performance Measures

Measure Definitions

Provide Access to Extraordinary Education for All Minnesotans

Diversity

Employee Diversity - Employees of Color

Measure Description:	Employees of color as a percent of total employees.
Numerator Description:	The (unduplicated) headcount of employees of color for each institution.
Denominator Description:	The (unduplicated) total number of employees (The denominator includes employees with unknown race/ethnicity.)
Reporting Level:	Institution
Source:	System Data Warehouse
Goal Direction:	Increase

Student Diversity - Students of Color

Measure Description:	Student of color credit students as a percent of total credit headcount.
Numerator Description:	Fiscal year unduplicated number of students of color enrolled in credit courses.
Denominator Description:	Fiscal year unduplicated number of students enrolled in credit courses.
Reporting Level:	Institution
Source:	System Data Warehouse
Goal Direction:	Increase

Student Diversity - Pell Eligible Students (Contextual Measure)

Measure Description:	Pell-eligible credit students as a percent of total credit headcount.
Numerator Description:	Fiscal year unduplicated number of pell-eligible students enrolled in credit courses.
Denominator Description:	Fiscal year unduplicated number of students enrolled in credit courses.
Reporting Level:	Institution
Source:	System Data Warehouse
Goal Direction:	Contextual measure - No goal established

Student Diversity - First Generation Students (Contextual Measure)

Measure Description:	First generation credit students as a percent of total credit headcount.
Numerator Description:	Fiscal year unduplicated number of first generation students enrolled in credit courses.
Denominator Description:	Fiscal year unduplicated number of students enrolled in credit courses.
Reporting Level:	Institution
Source:	System Data Warehouse
Goal Direction:	Contextual measure - No goal established



Accountability Dashboard

Strategic Framework Performance Measures

Measure Definitions

Provide Access to Extraordinary Education for All Minnesotans

Diversity

Student Diversity - Underrepresented Students (Contextual Measure)

Measure Description:	Underrepresented credit students as a percent of total credit headcount.
Numerator Description:	Fiscal year unduplicated number of underrepresented students enrolled in credit courses.
Denominator Description:	Fiscal year unduplicated number of students in credit courses.
Reporting Level:	Institution
Source:	System Data Warehouse
Goal Direction:	Contextual measure - No goal established

Student Success - Students of Color

Measure Description:	The ratio of the student persistence and completion rate for students of color to white students
Numerator Description:	The persistence and completion rate for students of color.
Denominator Description:	The persistence and completion rate for white students (Does not include students with unknown race/ethnicity status).
Reporting Level:	Institution
Source:	System Data Warehouse
Goal Direction:	Achieve a ratio of 1.0, indicating no gap between performance of students of color and white students.

Student Success - Pell Eligible Students (Contextual Measure)

Measure Description:	The ratio of the Pell-eligible student persistence and completion rate to non-Pell-eligible persistence and completion rate.
Numerator Description:	The persistence and completion rate for Pell-eligible students.
Denominator Description:	The persistence and completion rate for non-Pell-eligible students (Does not include students with unknown Pell eligibility status).
Reporting Level:	Institution
Source:	System Data Warehouse
Goal Direction:	Contextual measure - No goal established



Accountability Dashboard

Strategic Framework Performance Measures

Measure Definitions

Provide Access to Extraordinary Education for All Minnesotans

Diversity

Student Success - First Generation Students (Contextual Measure)

Measure Description:	The ratio of the student persistence and completion rate for first generation students to the rate for non-first generation students.
Numerator Description:	The persistence and completion rate for first generation students.
Denominator Description:	The persistence and completion rate for non-first generation students (Does not include students with unknown first generation status).
Reporting Level:	Institution
Source:	System Data Warehouse
Goal Direction:	Contextual measure - No goal established

Student Success of Diverse Populations (Contextual Measure)

Measure Description:	The ratio of the underrepresented student persistence and completion rate to non-underrepresented student persistence and completion rate. (Underrepresented students are students who are either Pell eligible or first-generation or student of color.)
Numerator Description:	The persistence and completion rate for underrepresented students.
Denominator Description:	The persistence and completion rate for non-underrepresented students. (Does not include students with unknown underrepresented status).
Reporting Level:	Institution
Source:	System Data Warehouse
Goal Direction:	Contextual measure - No goal established

Completion Rate - Students of Color

Measure Description:	The ratio of the student completion rate for students of color to white students
Numerator Description:	The completion rate for students of color.
Denominator Description:	The completion rate for white students (Does not include students with unknown race/ethnicity status).
Reporting Level:	Institution
Source:	System Data Warehouse
Goal Direction:	Achieve a ratio of 1.0, indicating no gap between performance of students of color and white students.



Accountability Dashboard

Strategic Framework Performance Measures

Measure Definitions

Provide Access to Extraordinary Education for All Minnesotans

Diversity

Completion Rate - Pell Eligible Students (Contextual Measure)

Measure Description:	The ratio of the Pell-eligible student completion rate to non-Pell-eligible completion rate.
Numerator Description:	The completion rate for Pell-eligible students.
Denominator Description:	The completion rate for non-Pell-eligible students (Does not include students with unknown Pell eligibility status).
Reporting Level:	Institution
Source:	System Data Warehouse
Goal Direction:	Contextual measure - No goal established

Completion Rate - First Generation Students (Contextual Measure)

Measure Description:	The ratio of the student completion rate for first generation students to the rate for non-first generation students.
Numerator Description:	The completion rate for first generation students.
Denominator Description:	The completion rate for non-first generation students (Does not include students with unknown first generation status).
Reporting Level:	Institution
Source:	System Data Warehouse
Goal Direction:	Contextual measure - No goal established

Completion Rate for Diverse Populations (Contextual Measure)

Measure Description:	The ratio of the underrepresented student completion rate to non-underrepresented student completion rate. (Underrepresented students are students who are either Pell eligible or first-generation or student of color.)
Numerator Description:	The completion rate for underrepresented students.
Denominator Description:	The persistence and completion rate for non-underrepresented students. (Does not include students with unknown underrepresented status).
Reporting Level:	Institution
Source:	System Data Warehouse
Goal Direction:	Contextual measure - No goal established



Accountability Dashboard

Strategic Framework Performance Measures

Measure Definitions

Provide Access to Extraordinary Education for All Minnesotans

Diversity

Campus Diversity Climate

Measure Description:	The extent to which the college or university promotes contact with and understanding of diverse populations, as measured by student opinion.
Numerator Description:	N/A
Denominator Description:	The number of student survey responses.
Reporting Level:	Institution
Source:	Community College Survey of Student Engagement (CCSSE) and the National Survey of Student Engagement (NSSE).
Goal Direction:	Increase

Be the Partner of Choice to Meet Workforce and Community Needs

Certificates and Degrees Awarded

Measure Description:	The number of certificates, diplomas and degrees awarded each fiscal year. This is a count of the distinct awards per student.
Numerator Description:	N/A
Denominator Description:	N/A
Reporting Level:	Institution
Source:	System Data Warehouse
Goal Direction:	Increase

Related Employment of Graduates

Measure Description:	The percent of institution graduates in a fiscal year that reported they were employed during the year after graduation in a job that was related to their program or major.
Numerator Description:	The number of graduates that were employed during the year after graduation in jobs they reported to be related to their program or major.
Denominator Description:	The number of graduates in related employment plus those seeking related employment and those available for work but unemployed. Students in prison programs, students in joint institution programs, and foreign national students are excluded.
Reporting Level:	Institution
Source:	System Office Research, Planning and Effectiveness, Graduate Follow-Up data
Goal Direction:	Increase



Accountability Dashboard

Strategic Framework Performance Measures

Measure Definitions

Be the Partner of Choice to Meet Workforce and Community Needs

Alignment of Academic Programs with Workforce Needs

Measure Description:	Percent of projected Minnesota employment demand met by higher education graduates.
Numerator Description:	TBD
Denominator Description:	TBD
Reporting Level:	State (by degree levels)
Source:	Minnesota Office of Employment and Economic Development (demand); Minnesota Office of Higher Education (supply)
Goal Direction:	

Customized Training / Continuing Education Enrollment

Measure Description:	Unduplicated number of students enrolled in credit or non-credit contract customized training courses or non-credit occupational/professional instructional courses.
Numerator Description:	N/A
Denominator Description:	N/A
Reporting Level:	Institution
Source:	System Data Warehouse
Goal Direction:	Increase

Provide Highest Value / Most Cost-Effective Higher Education Option

Efficient Use of Resources

Institutional Support Expenses

Measure Description:	Institutional support expenses as a percent of total expenses.
Numerator Description:	Expenses for Institutional Support.
Denominator Description:	Total expenses.
Reporting Level:	Institution
Source:	System Data Warehouse
Goal Direction:	Decrease



Accountability Dashboard

Strategic Framework Performance Measures

Measure Definitions

Provide Highest Value / Most Cost-Effective Higher Education Option

Efficient Use of Resources

Space Utilization

Measure Description:	Percent of available academic room time that is utilized for credit courses.
Numerator Description:	Number of hours that academic rooms are used for credit courses for the fiscal year.
Denominator Description:	Number of hours academic rooms are available for the fiscal year, set at 32 hours per week. Academic rooms are rooms coded as classrooms (code 110) or labs (code 210).
Reporting Level:	Institution
Source:	ISRS, EMS-Campus
Goal Direction:	Increase

Instructional Cost Per FYE

Measure Description:	The ratio of the Actual to Expected Value of the Fully-allocated instructional expenditures per full-year equivalent enrollment (FYE)
Numerator Description:	The institution's actual value of the fully-allocated instructional expenditures per full-year equivalent enrollment (FYE)
Denominator Description:	The institution's expected value of the fully-allocated instructional expenditures per full-year equivalent enrollment (FYE)
Reporting Level:	Institution
Source:	System Data Warehouse
Goal Direction:	Achieve a ratio of 1.0 or less

Steward Financial and Physical Resources

Composite Financial Index (CFI)

Measure Description:	Weighted composition of four financial measures: Primary Reserve Ratio, Viability Ratio, Return on Net Assets, and Operating Margin.
Numerator Description:	N/A
Denominator Description:	N/A
Reporting Level:	Institution
Source:	System Office Finance Division
Goal Direction:	Increase



Accountability Dashboard

Strategic Framework Performance Measures

Measure Definitions

Provide Highest Value / Most Cost-Effective Higher Education Option

Steward Financial and Physical Resources

Facilities Condition Index (FCI)

Measure Description:	The dollar value of deferred maintenance as a proportion of facility replacement value at each college and university.
Numerator Description:	Total dollar amount of deferred maintenance on all facilities.
Denominator Description:	The current replacement value (\$) for all facilities.
Reporting Level:	Institution
Source:	System Office Finance Division
Goal Direction:	Maintain between .07 and .13

Develop New Resources

Private Giving

Measure Description:	Ratio of funds raised by the Foundation to the net funds provided by the institution to the Foundation.
Numerator Description:	Dollars amount (\$) raised by the Foundation.
Denominator Description:	Net Dollar amount (\$) provided by the institution to the Foundation.
Reporting Level:	Institution
Source:	System Office Advancement Division, Annual Return on Investment Reports from college and university foundations.
Goal Direction:	Increase

Grants

Measure Description:	Grant revenues received by the institution in the fiscal year.
Numerator Description:	N/A
Denominator Description:	N/A
Reporting Level:	Institution
Source:	System Office Finance Division, Financial Reporting Unit. All grant data reported in audited financial statements
Goal Direction:	Increase



Accountability Dashboard

Strategic Framework Performance Measures

Measure Definitions

Provide Highest Value / Most Cost-Effective Higher Education Option

Develop New Resources

Customized Training and Continuing Education Revenues

Measure Description:	Total customized training revenue received in a fiscal year net of state appropriations.
Numerator Description:	N/A
Denominator Description:	N/A
Reporting Level:	Institution
Source:	System Data Warehouse
Goal Direction:	Increase

Collective Success of the MnSCU System in Serving the State and Regions

Successful Transfer: Percent Credits Accepted in Transfer at Receiving Institutions

Measure Description:	Percent of credits accepted in transfer for undergraduate students at receiving institutions.
Numerator Description:	Total credits accepted in transfer at receiving institutions.
Denominator Description:	Cumulative college-level credits earned at sending institutions.
Reporting Level:	Institution
Source:	System Data Warehouse
Goal Direction:	Increase

System Market Share of Awards Conferred

Measure Description:	System percentage share of degrees, diplomas and certificates conferred by Minnesota higher education institutions.
Numerator Description:	Total awards conferred by system institutions
Denominator Description:	Total awards conferred by all Minnesota institutions, per level: Sub-baccalaureate, Baccalaureate, and Graduate.
Reporting Level:	System
Source:	Integrated Postsecondary Education Data System (IPEDS) Awards Conferred
Goal Direction:	Increase



Accountability Dashboard

Strategic Framework Performance Measures

Measure Definitions

Collective Success of the MnSCU System in Serving the State and Regions

System Market Share of Sub-Baccalaureate Awards Conferred (Contextual Measure)

Measure Description:	System percentage share of sub-baccalaureate degrees, diplomas and certificates conferred by Minnesota higher education institutions.
Numerator Description:	Total sub-baccalaureate awards conferred by system institutions
Denominator Description:	Total sub-baccalaureate awards conferred by all Minnesota institutions, per level: Sub-baccalaureate, Baccalaureate, and Graduate.
Reporting Level:	System
Source:	Integrated Postsecondary Education Data System (IPEDS) Awards Conferred
Goal Direction:	Contextual measure - No goal established

System Market Share of Baccalaureate Awards Conferred (Contextual Measure)

Measure Description:	System percentage share of baccalaureate degrees, diplomas and certificates conferred by Minnesota higher education institutions.
Numerator Description:	Total baccalaureate awards conferred by system institutions
Denominator Description:	Total baccalaureate awards conferred by all Minnesota institutions, per level: Sub-baccalaureate, Baccalaureate, and Graduate.
Reporting Level:	System
Source:	Integrated Postsecondary Education Data System (IPEDS) Awards Conferred
Goal Direction:	Contextual measure - No goal established

System Market Share of Graduate Awards Conferred (Contextual Measure)

Measure Description:	System percentage share of graduate degrees, diplomas and certificates conferred by Minnesota higher education institutions.
Numerator Description:	Total graduate awards conferred by system institutions
Denominator Description:	Total graduate awards conferred by all Minnesota institutions, per level: Sub-baccalaureate, Baccalaureate, and Graduate.
Reporting Level:	System
Source:	Integrated Postsecondary Education Data System (IPEDS) Awards Conferred
Goal Direction:	Contextual measure - No goal established



Accountability Dashboard

Strategic Framework Performance Measures

Measure Definitions

Collective Success of the MnSCU System in Serving the State and Regions

System Share of Higher Education Enrollment

Measure Description:	System's percent of higher education enrollments (Minnesota residents).
Numerator Description:	Subset of the denominator that enrolled in system institutions.
Denominator Description:	Number of fall term enrollments of Minnesota residents in Minnesota higher education institutions (credit students, undergraduate).
Reporting Level:	System
Source:	Minnesota Office of Higher Education
Goal Direction:	Increase
